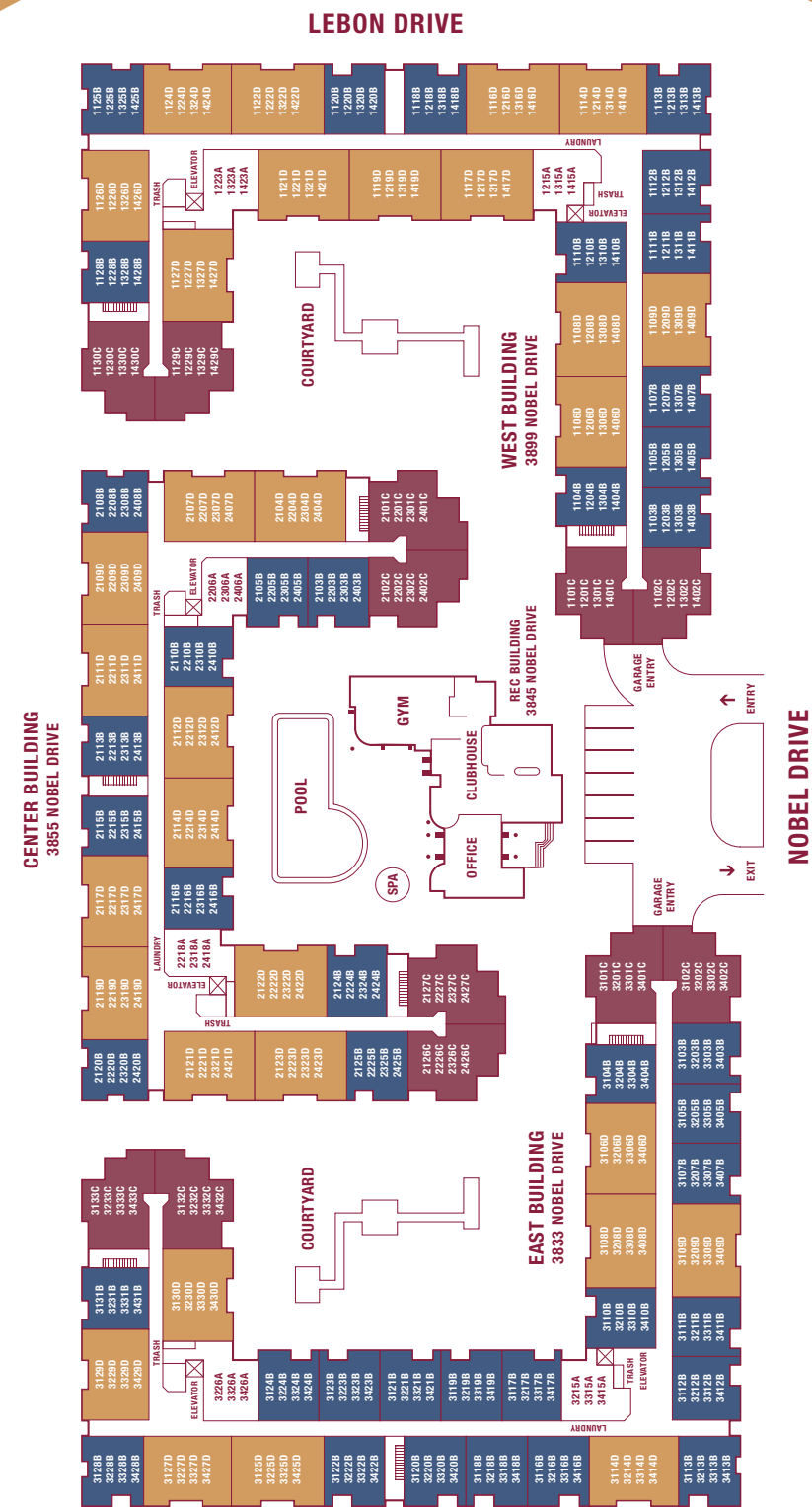


LA SCAIA



MODEL A B C D



- LEGEND**
- MCAS Miramar
 - Scripps Clinic
 - Scripps Memorial Hospital
 - VA Medical Center
 - Hyatt Aventure/Fine Dining
 - UCSD/La Jolla Playhouse
 - UTC - Shopping Mall
 - Costa Verde Shopping Center
 - La Jolla Village Square
 - Torrey Pines Golf Course
 - La Jolla Shores Beach
 - Doyle Community Park
 - Downtown La Jolla
 - Whole Foods - Grocery
 - Vons - Grocery
 - Albertsons - Grocery
 - Ralphs - Grocery
 - Stephen Birch Aquarium
 - Torrey Pines State Park
 - La Jolla Cove
 - Bicycle Trails
 - Movie Theaters

INTERIOR FEATURES

- All master bedrooms with spacious walk-in closets
- Private balcony or patio
- Dramatic cathedral ceilings in all top floor homes
- Reserved underground parking
- Convenient elevators
- Fully equipped kitchen with microwave and refrigerator
- Storage

PROPERTY FEATURES

- Fully-equipped fitness center featuring weight-training stations, Aerobicycles, Stairmasters, Treadmill and free fitness classes
- Resort-style pool and spa
- Impressive party club house with full kitchen, billiards and barbecues
- In the highly-regarded Golden Triangle

3845 NOBEL DRIVE • SAN DIEGO, CA 92122
(858) 457-4444 • FAX: (858) 457-7721 • LaScala@Lomco.net



Lomco Residential Communities reserves the right to change prices, terms, specifications and features without prior notice. Total square footage and room dimensions are approximate and subject to minor variations.



LA SCAIA

L U X U R Y V I L L A S

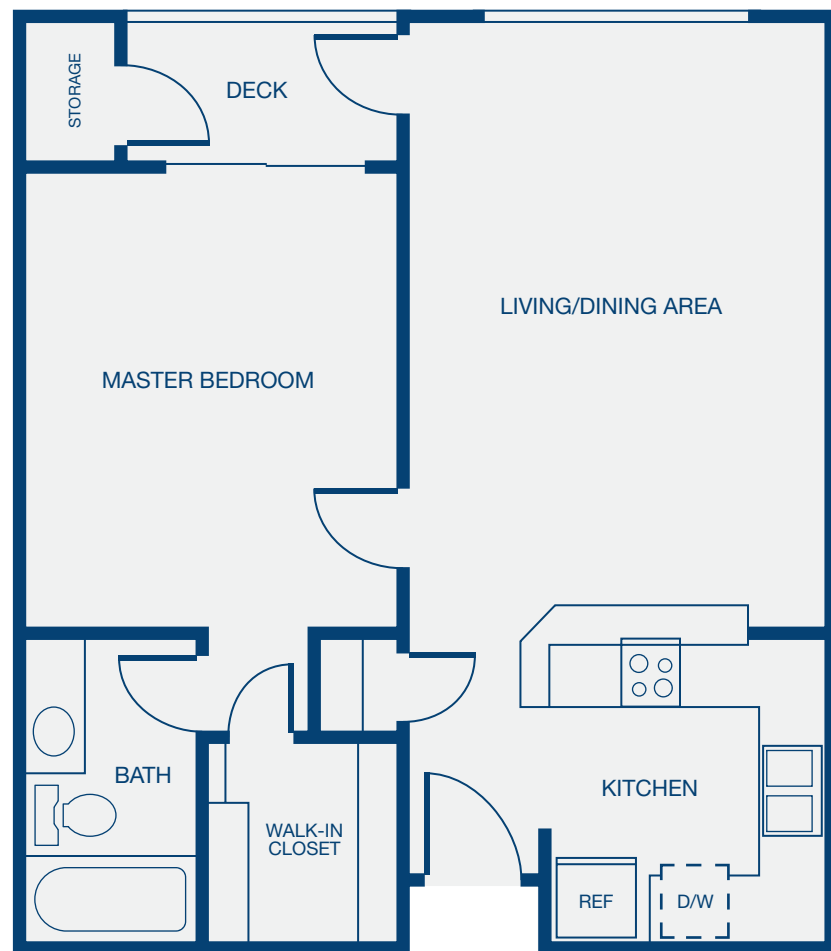
CONCERTO

MODEL B

One Bedroom
One Bath
640 square feet (approx.)

PRICE _____

SECURITY DEPOSIT _____



Also available: **STUDIO**
MODEL A

PRICE _____

SECURITY DEPOSIT _____

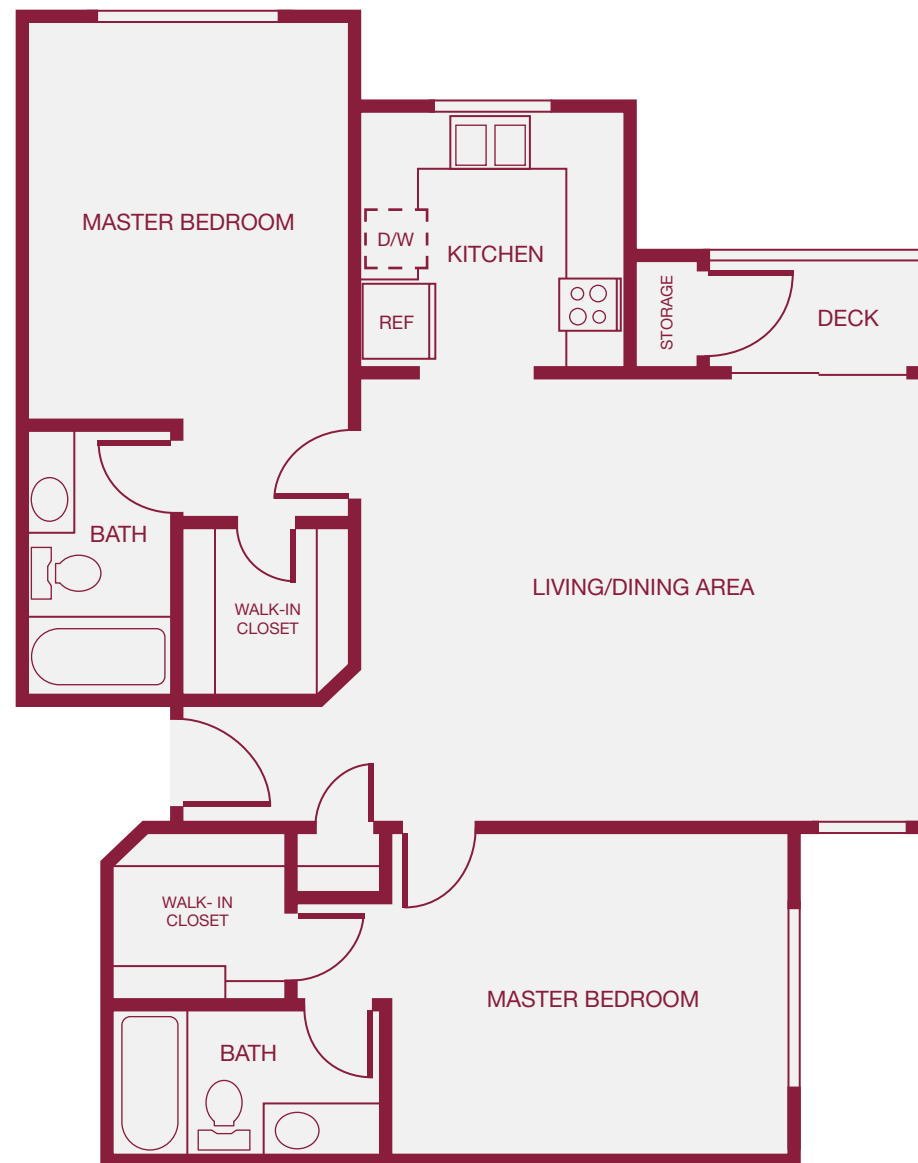
SINFONIA

MODEL C

Two Bedroom
Two Bath
969 square feet (approx.)

PRICE _____

SECURITY DEPOSIT _____



OPERA

MODEL D

Two Bedroom
Two Bath
1010 square feet (approx.)

PRICE _____

SECURITY DEPOSIT _____

